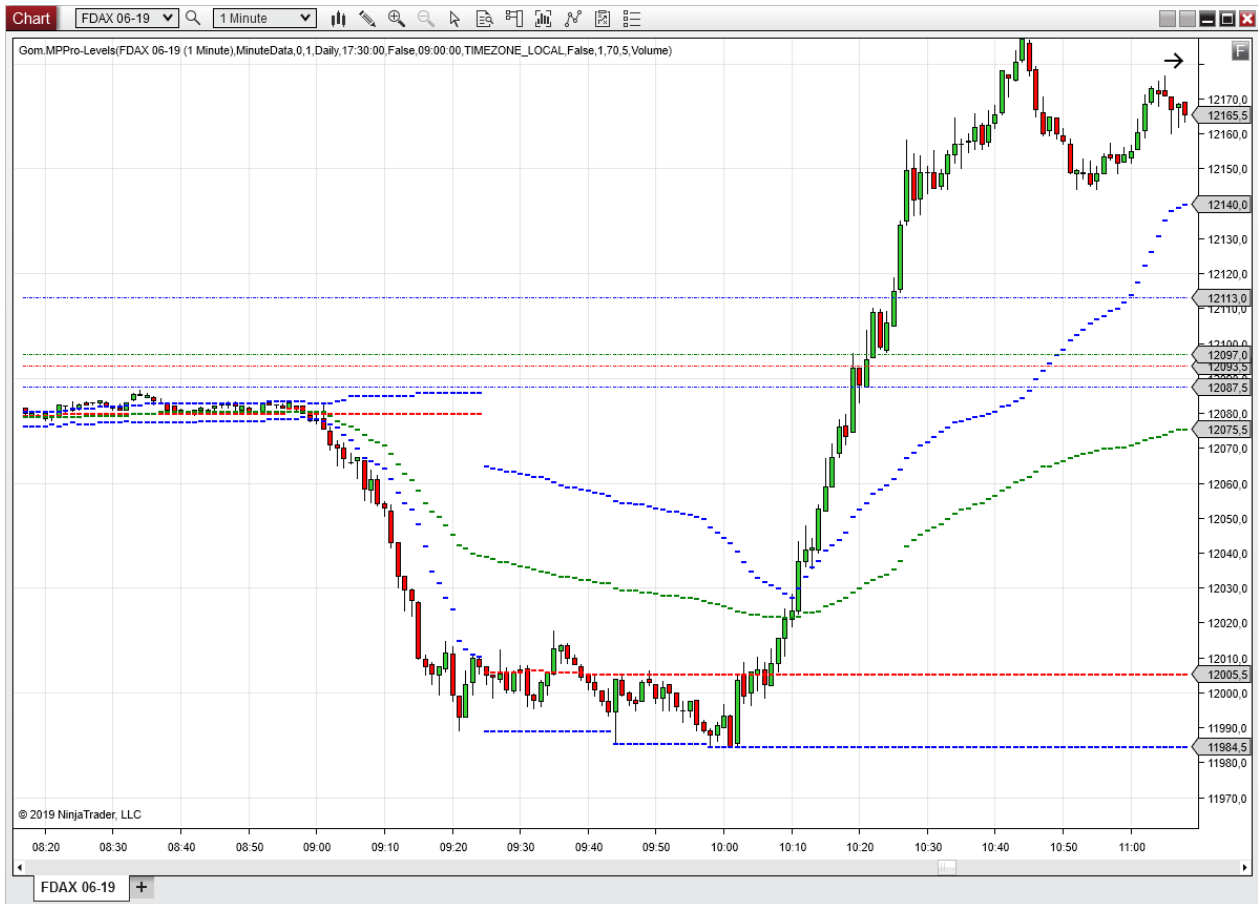


GOMMP PRO ADDITIONAL INDICATORS

DOCUMENTATION OF MARKET PROFILE ADDITIONAL INDICATORS

Version 5.6

Copyright Gomex 2020

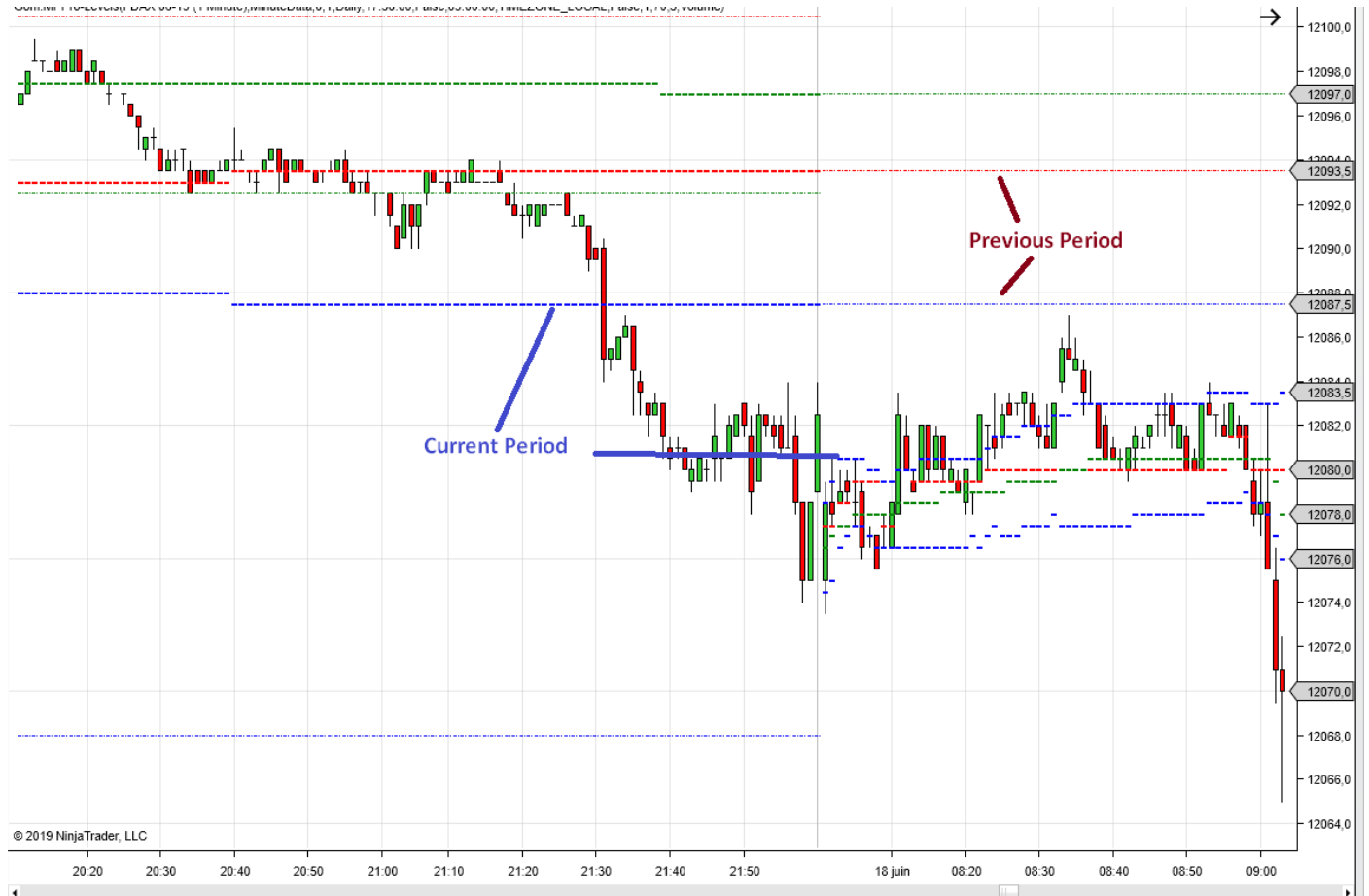


GOMMPRO-LEVELS

DESCRIPTION

This indicator/study exposes Current POC,VAH, VAL and VWAP as well as previous period POC,VAH,VAL and VWAP

It also exposes HVN/LVN levels , for advanced programmers




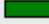






SETTINGS

Same as GomMPPro, see the relevant doc.

▼ Data	
Data Source	MinuteData ▼
Color Missing Data Bars	<input checked="" type="checkbox"/>
Missing Data Alert Message	<input checked="" type="checkbox"/>
▼ Main Settings	
Ticks Per Volume Bar	1
Periodicity	Daily ▼
N in EveryNBars	1
Nb smoothing bars	0
Plotted Volume	Volume ▼
▼ Session	
Use Custom Session	<input type="checkbox"/>
Session Start Time	09:00:00
Session End Time	17:30:00
Session Time Zone	Local ▼
Limit length to 1 Day	<input type="checkbox"/>
▼ POC/VA/VWAP	
VA Percent	70
▼ HVN/LVN	
Min peak size	5

EXPOSED PLOTS

▼ Plots	
▶ POC	 Hash, Solid, 2px
▶ VAH	 Hash, Solid, 2px
▶ VAL	 Hash, Solid, 2px
▶ VWAP	 Hash, Solid, 2px
▶ PreviousPOC	 Hash, Dash, 1px
▶ PreviousVAH	 Hash, Dash, 1px
▶ PreviousVAL	 Hash, Dash, 1px
▶ PreviousVWAP	 Hash, Dash, 1px

Periodicities

Daily ▼
Bar
EveryNBar
LastNBar
Daily
Weekly
Monthly

CONSTRUCTOR NT7

```
string sessionEndTimeSerialize, string sessionStartTimeSerialize, GomTZ sessionTimeZone, int ticksPerVolumeBar, l, int nValue, Periodicity period,  
string sessionEndTimeSerialize, string sessionStartTimeSerialize, GomTZ sessionTimeZone, int ticksPerVolumeBar,  
bool useCustomSession, double vAPercent, int vNSize, ProfileData vT)
```

Example (check GomMPPrevPOCSampleStrat)

```
gmpl = GomMPProLevels(Gom.MP.DataSourceType.MinuteData, false, 0, 1,  
Gom.MP.Periodicity.Daily, "17:00:00", "09:00:00",  
Gom.Lib.GomTZ.TIMEZONE_LOCAL, 1, false, 70, 5,  
Gom.MP.ProfileData.Volume);
```

CONSTRUCTOR NT8

```
Ⓞ GomMPProLevels Strategy.GomMPProLevels(DataSourceType dataSource, int ticksPerVolumeBar, Periodicity period, int nValue, int  
nbSmooth, ProfileData volumeOrTicks, bool sessionUseCustom, string sessionStartTimeSerialize, string sessionEndTimeSerialize,  
GomTZ sessionTimeZone, bool sessionLimitToOneDay, double vAPercent, int vNSize)
```

Example (check GomMPPrevPOCSampleStrat)

```
gmpl = GomMPProLevels(Gom.MP.DataSourceType.MinuteData, 1,  
Gom.MP.Periodicity.Daily, 1, 0, Gom.MP.ProfileData.Volume,  
false, "09:00:00", "17:30:00", Gom.Lib.GomTZ.TIMEZONE_LOCAL,  
false, 70, 5);
```

HVN/LVN DATA API

This is intended for advanced developers.

The Levels indicator also exposes HVN/LVN nodes as price lists, allowing the coding of custom indicators using these levels.

The exposed property is names *VN*, and contains 2 lists : *HVNs* and *LVNs* . These lists contains the individual prices of the HVN and LVN nodes

So here is how you would iterate through the collections:

```
Print("HVNs");
foreach(double hvn in gommpl.VN.HVNs)
    Print(hvn);

Print("LVNs");
foreach(double lvn in gommpl.VN.LVNs)
    Print(lvn);

Print("POC");
Print(gommpl.POC[0]);
```

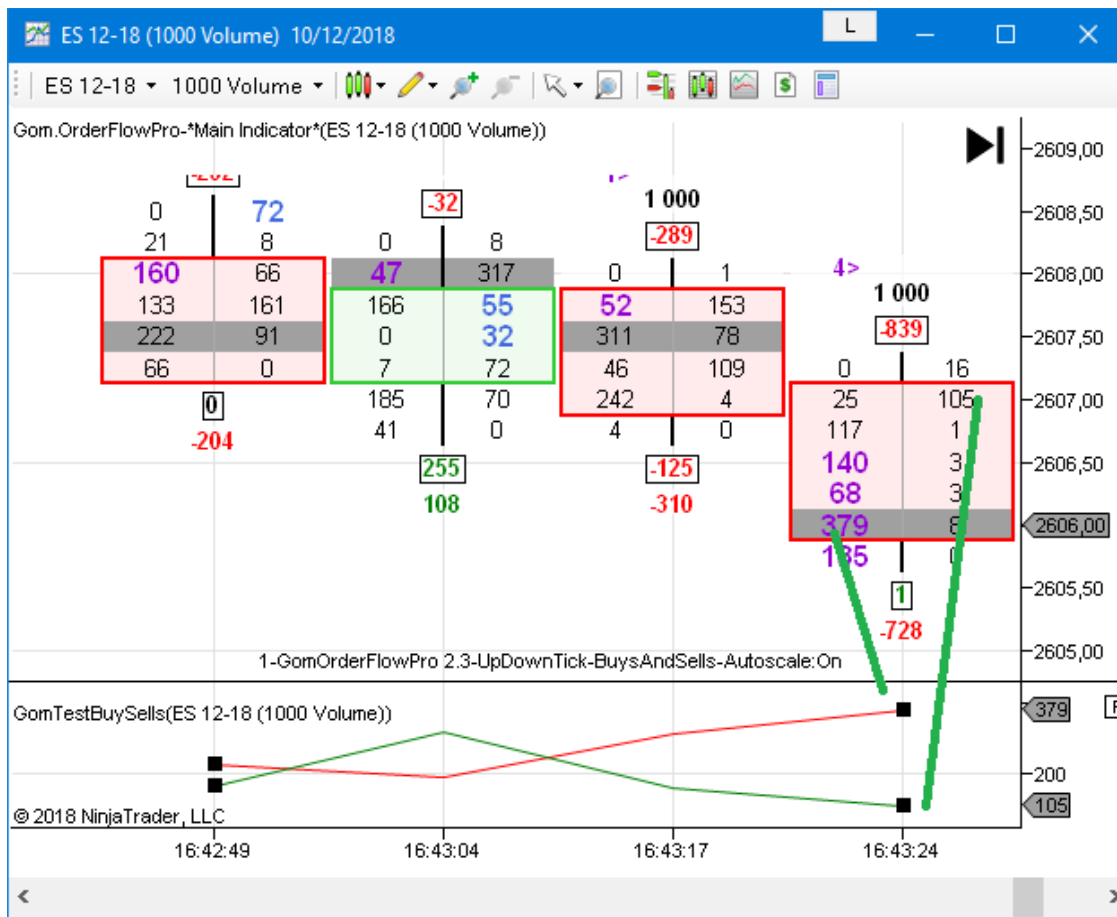
And we show the POC at the end...

2 demo indicators named **GomTestMPLevels.cs** are available in <https://www.gomicators.com/download/support-files/>.

Result

```
0-15/05/2019 08:05:00
HVNs
12006,5
12010
12011,5
12014
12018
12020
LVNs
12008
12010,5
12013,5
12016
12019,5
POC
12011,5
0-15/05/2019 08:05:00
```

NT7 :



NT8

